

Notes:

Bearings relate to MGA Grid North using DP 1141040. See North Point for approximate relationship to True North.

Services shown are indicative only. Positions are based on surface indicator(s) located during field survey. Confirmation of the exact position should be made to the relevant authorities prior to any excavation work. Other services may exist which are not shown.

Levels are based on Australian Height Datum (AHD) using PM 51006 with a reduced level 13.299
Class LB
Order L2

Origin of MGA coordinates PM51715

Ridge, Eave, Gutter, Parapets, Windows & Doors heights have been obtained by an indirect method and are accurate to ± 0.05m.

Adjoining buildings have been plotted for diagrammatic purposes only.

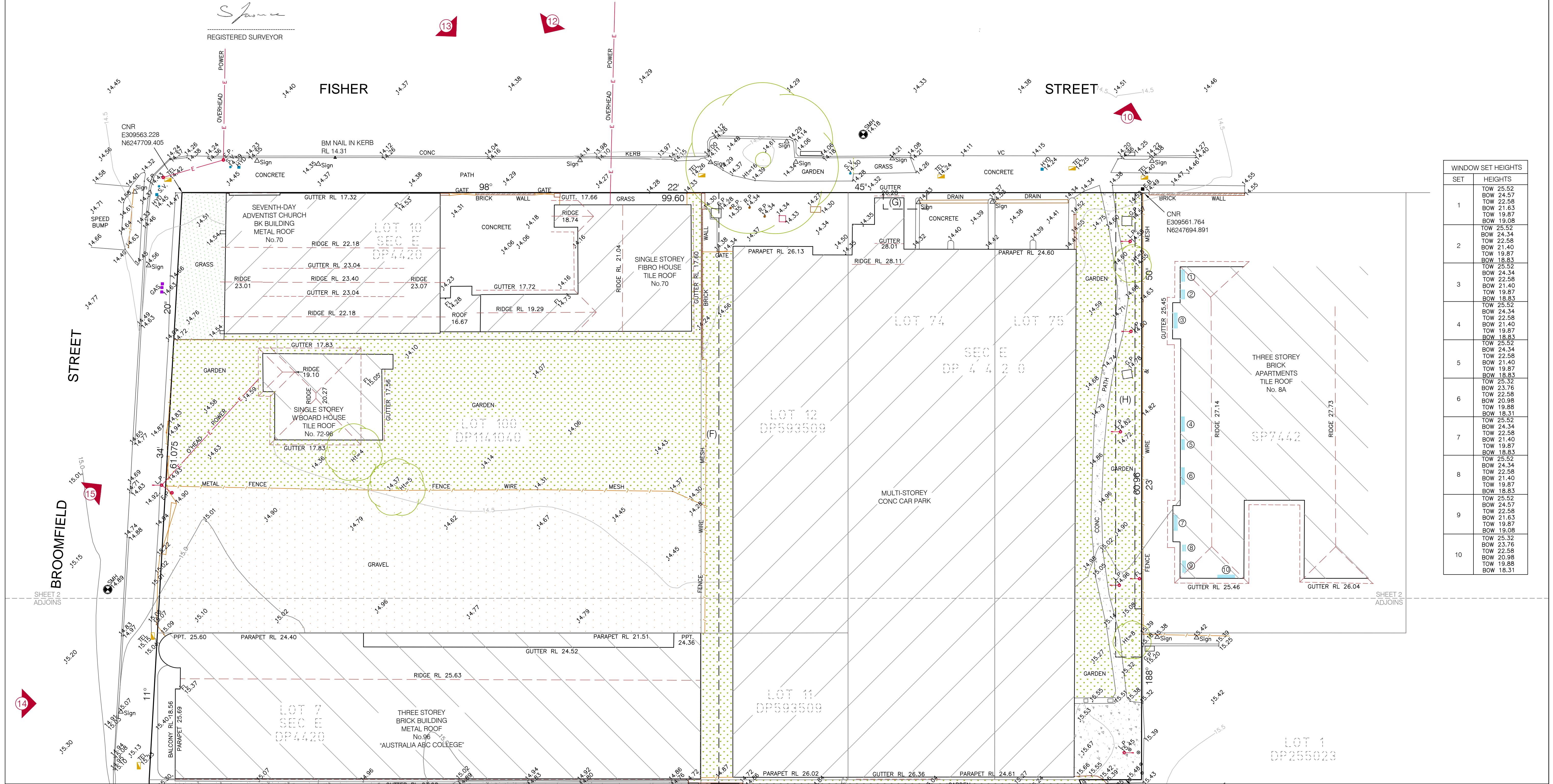
Contours are an indication of landform and should not be taken in preference to spot levels shown.

Contour interval 0.5m

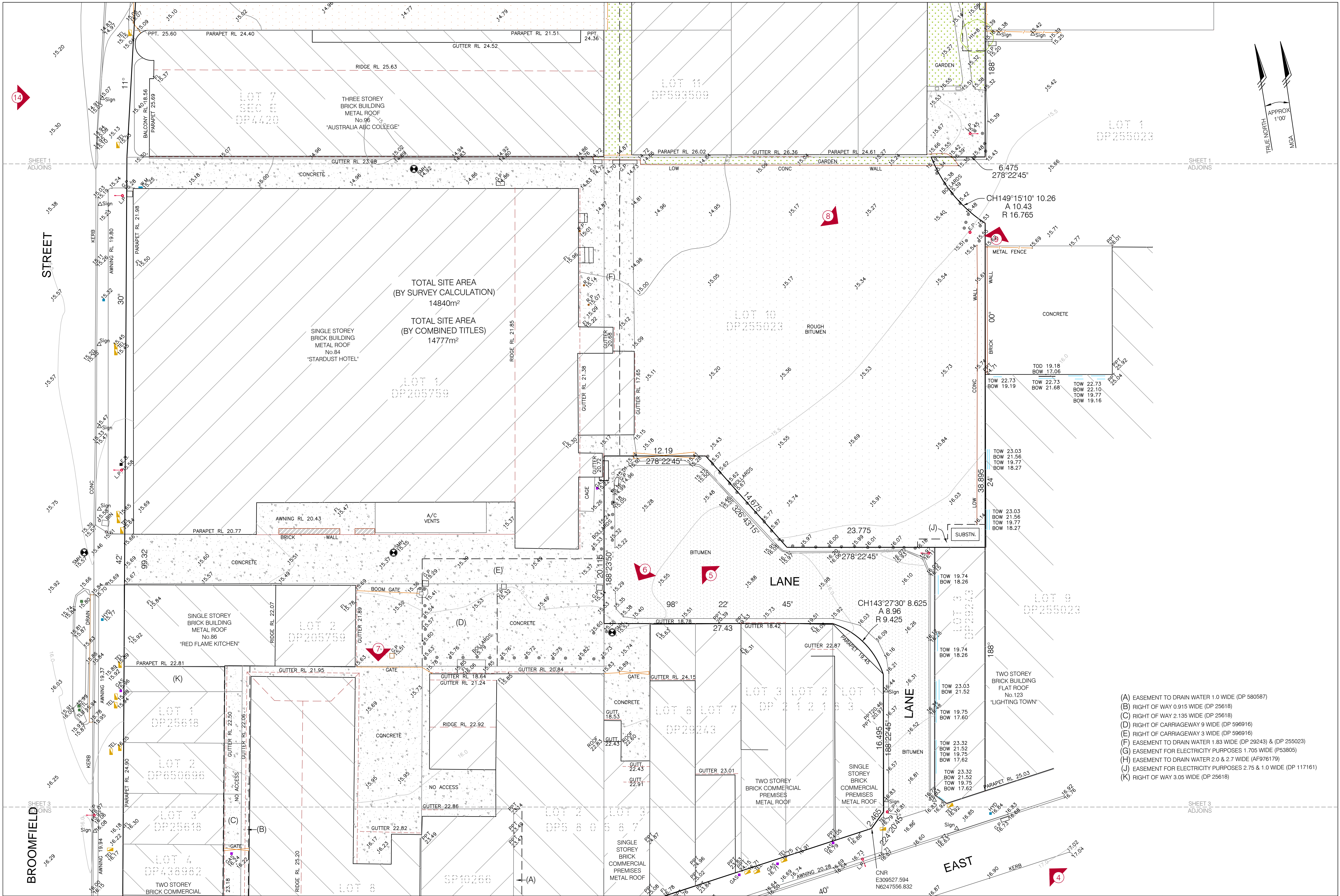
This plan is of an Identification/Re-mark Survey only and as such is not registered by the Registrar of Titles. Subsequent registered or other surveys in this area may affect the boundary definition shown on this plan are beyond the control of Veris, who can accept no responsibility for such differences.

A full survey plan of redefinition should be carried out and registered prior to any construction works commencing.

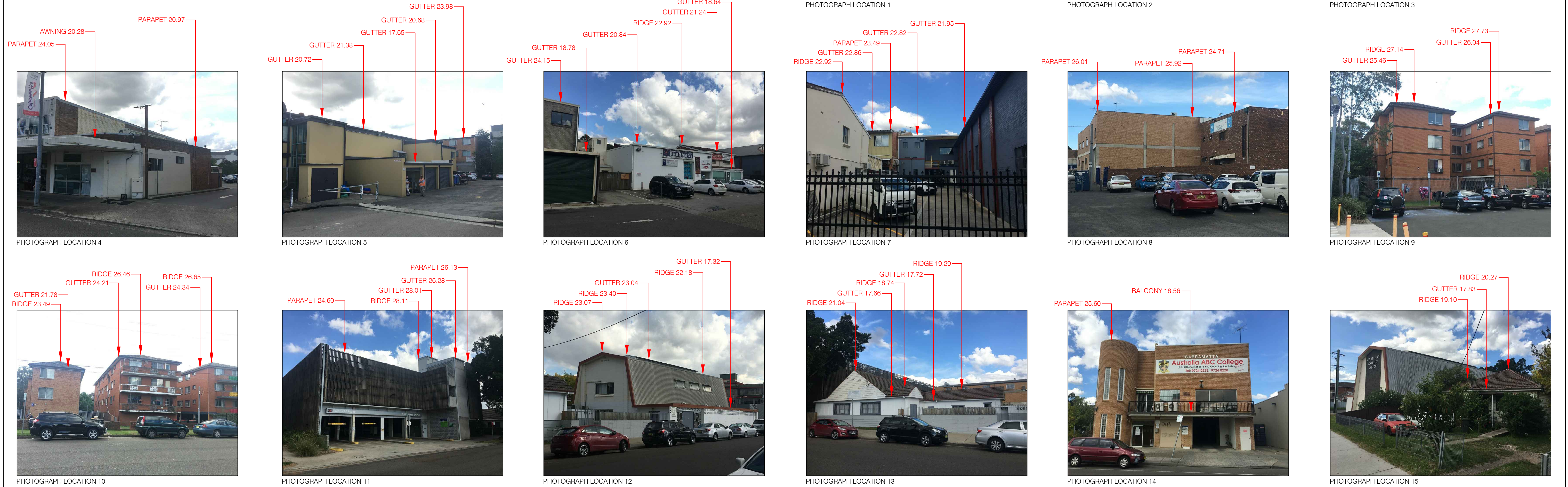
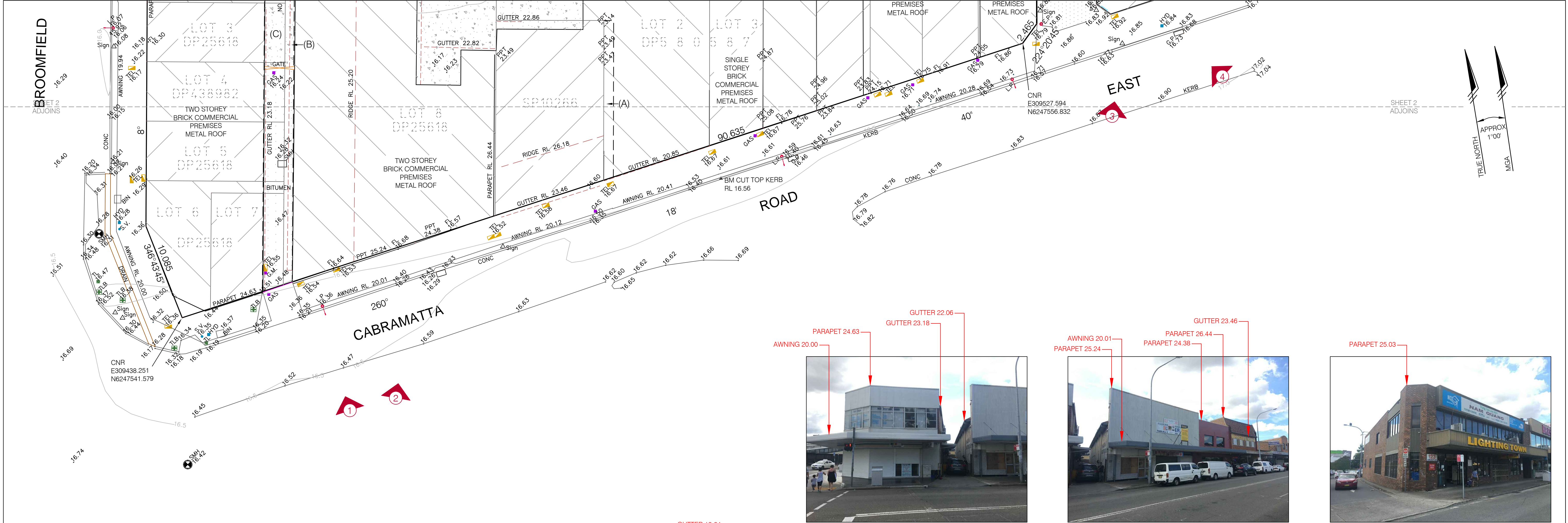
REGISTERED SURVEYOR



WINDOW SET HEIGHTS	
SET	HEIGHTS
1	TOW 25.52
	BOW 24.57
	TOW 22.58
	BOW 21.63
	TOW 19.87
2	BOW 19.08
	TOW 25.52
	BOW 24.34
	TOW 22.58
	BOW 21.40
3	TOW 19.87
	BOW 18.83
	TOW 25.52
	BOW 24.34
	TOW 22.58
4	BOW 21.40
	TOW 19.87
	BOW 18.83
	TOW 25.52
	BOW 24.34
5	TOW 22.58
	BOW 21.40
	TOW 19.87
	BOW 18.83
	TOW 25.52
6	BOW 23.76
	TOW 22.58
	BOW 20.98
	TOW 19.87
	BOW 18.31
7	TOW 25.52
	BOW 24.34
	TOW 22.58
	BOW 21.40
	TOW 19.87
8	BOW 18.83
	TOW 25.52
	BOW 24.34
	TOW 22.58
	BOW 21.40
9	TOW 19.87
	BOW 18.83
	TOW 25.52
	BOW 24.57
	TOW 22.58
10	BOW 21.63
	TOW 19.87
	BOW 18.31
	TOW 25.52
	BOW 24.57



<div><div></div><div>veris</div></div> <div>T: 1300 765 315 F: 1300 765 316 E: info@veris.com.au W: www.veris.com.au</div>	Head Office (NSW) Level 1, 183 Ournbah Road Mosman NSW 2088 PO Box 198, Cremorne NSW 2090	Issue	Amendment	Date	LEGEND	CLIENT MOON INVESTMENTS PTY LTD	PROJECT BROOMFIELD STREET CABRAMATTA	TITLE INFORMATION Lot: VARIOUS Plan No.: VARIOUS Title / Folio: VARIOUS L.G.A.: FAIRFIELD Parish: ST LUKE County: CUMBERLAND	QUALITY ASSURANCE Surveyor: GC Drawn: GC Checked by: BJ Date: 04/05/17 Approved by: SL Date: 4/05/17	COPYRIGHT © THIS DOCUMENT IS BOTH ELECTRONIC AND HARD COPY. IT IS THE PROPERTY OF VERIS PTY LTD. IT MUST NOT BE REPRODUCED OR COPIED IN ANY MANNER WITHOUT THE WRITTEN APPROVAL OF VERIS PTY LTD.	Cad ref: 173669-DETL-001B	JOB NUMBER 173669	DRAWING NUMBER / ISSUE DETL-001/B
DRAWING TITLE DETAIL & LEVEL SURVEY								COMPLETION OF QUALITY ASSURANCE IS EVIDENCE THAT THE SURVEY WORKS UNDERTAKEN AND THE DRAWING HAVE BEEN VERIFIED AS CONFORMING WITH THE REQUIREMENTS OF THE QUALITY PLAN. WHERE THE QUALITY ASSURANCE IS INCOMPLETE, ALL INFORMATION ON THIS DRAWING IS INTENDED FOR PRELIMINARY PURPOSES ONLY. ALL IT IS INTENDED.					
Date of Survey: 20/04/17 Datum: AHD Scale: 1:200 Date of Plan: 03/05/17 Co-ords: MGA (Original size A1) Sheet 2 of 3													



<div><div>veris</div><div>T: 1300 765 315 F: 1300 765 316 E: info@veris.com.au W: www.veris.com.au</div></div>	Head Office (NSW) Level 1, 183 Ournibah Road Mosman NSW 2088 PO Box 198, Cremorne NSW 2090			Issue	Amendment	Date	LEGEND	CLIENT MOON INVESTMENTS PTY LTD	PROJECT BROOMFIELD STREET CABRAMATTA	TITLE INFORMATION		QUALITY ASSURANCE		<div><div>COPYRIGHT ©: THIS DOCUMENT IS THE PROPERTY OF VERIS PTY LTD. IT IS NOT TO BE REPRODUCED, COPIED, OR OTHERWISE USED FOR ANY PURPOSE WITHOUT THE WRITTEN APPROVAL OF VERIS PTY LTD.</div><div>Cad ref: 173669-DETL-001B</div></div>	<div><div>JOB NUMBER 173669</div><div>DRAWING NUMBER / ISSUE DETL-001/B</div></div>		
					Lot:	VARIOUS				Surveyor:	GC	Date of Survey:	20/04/17			Date of Plan:	03/05/17
					Plan No.:	VARIOUS				Drawn:	GC	Datum:	AHD			Co-ords:	MGA
					Title / Folio:	VARIOUS				Checked by:	BJ	Scale:	1:200			(Original size A1)	
					L.G.A.:	FAIRFIELD				Date:	4/05/17	Approved by:	SL			Sheet	3 of 3
					Parish:	ST LUKE				COMPLETION OF QUALITY ASSURANCE IS EVIDENCE THAT THE SURVEY WORKS UNDERWENT AND THE DRAWING HAS BEEN VERIFIED AS CONFORMING WITH THE REQUIREMENTS OF THE QUALITY PLAN. WHERE THE QUALITY ASSURANCE IS INCOMPLETE, ALL INFORMATION ON THIS DRAWING IS INTENDED FOR PRELIMINARY PURPOSES ONLY. A/E IT IS							
				County:	CUMBERLAND												